



STUDENT SATISFACTION SURVEY

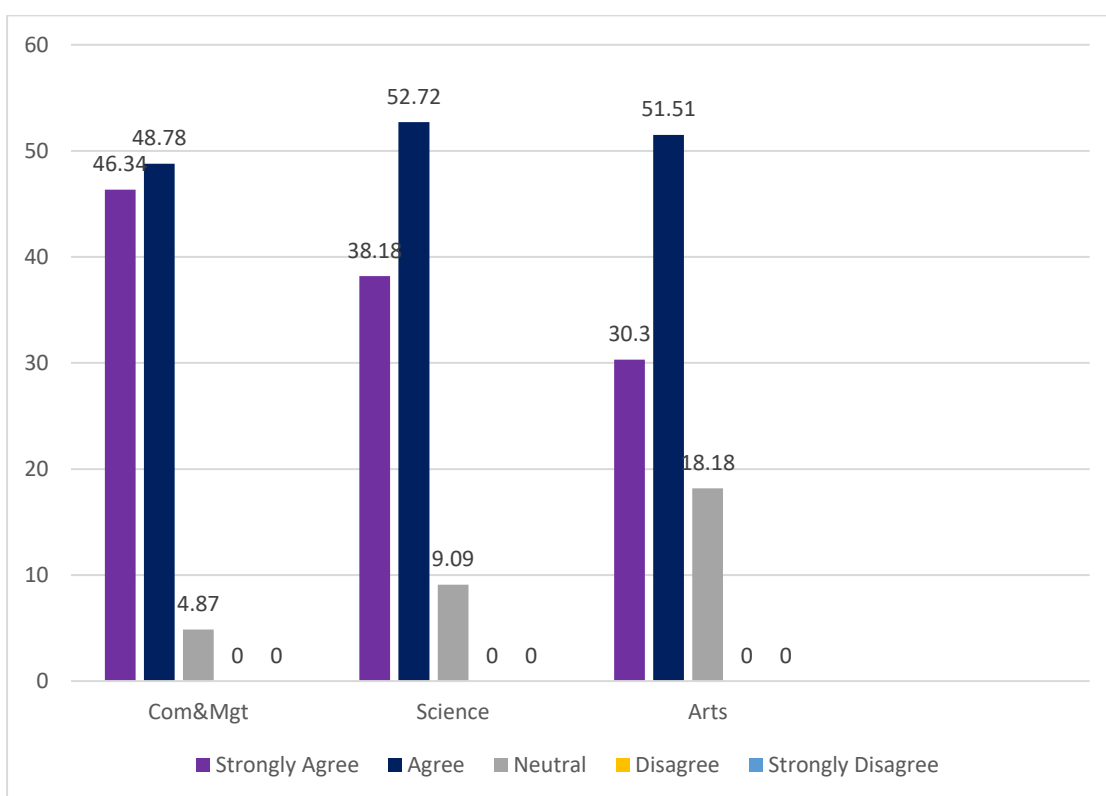
2020-21



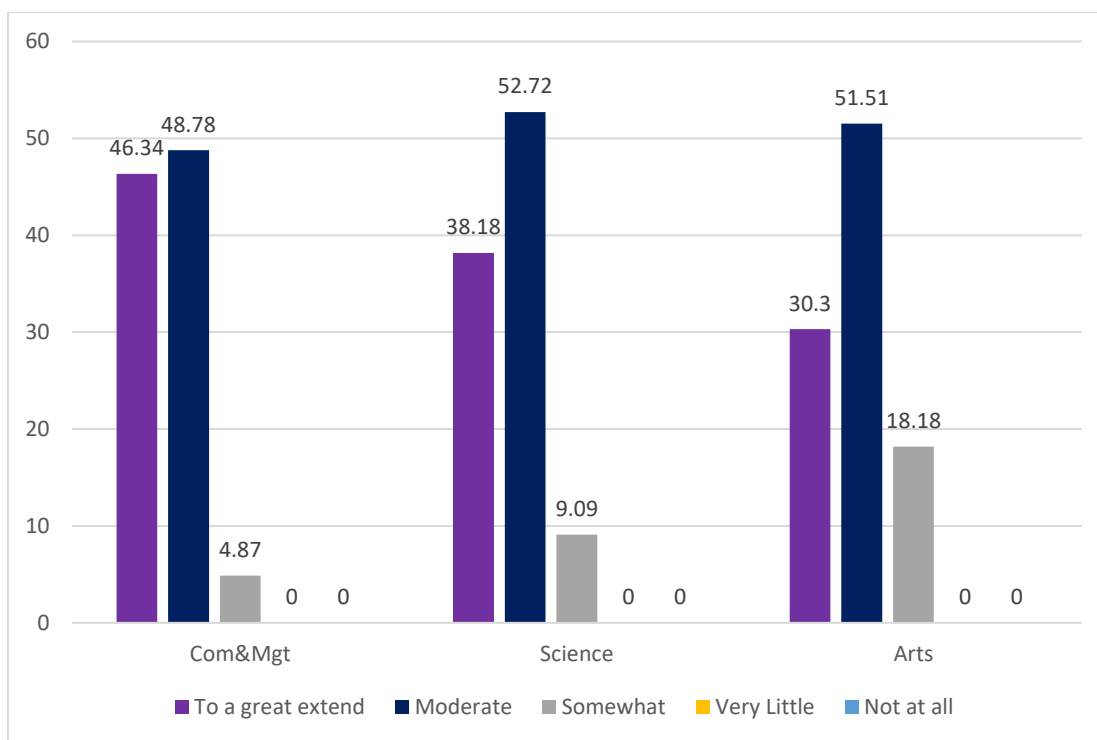
KURIAKOSE GREGORIOS COLLEGE, PAMPADY
REPORT OF STUDENT SATISFACTION SURVEY 2020-21

The college conducts the student satisfaction survey annually to ensure its effective management and to review the extent of services provided. The survey is conducted in tune with the NAAC rules and the result generated enables the institution to reflect on its practices and improve its procedures. The survey results are interpreted as follows.

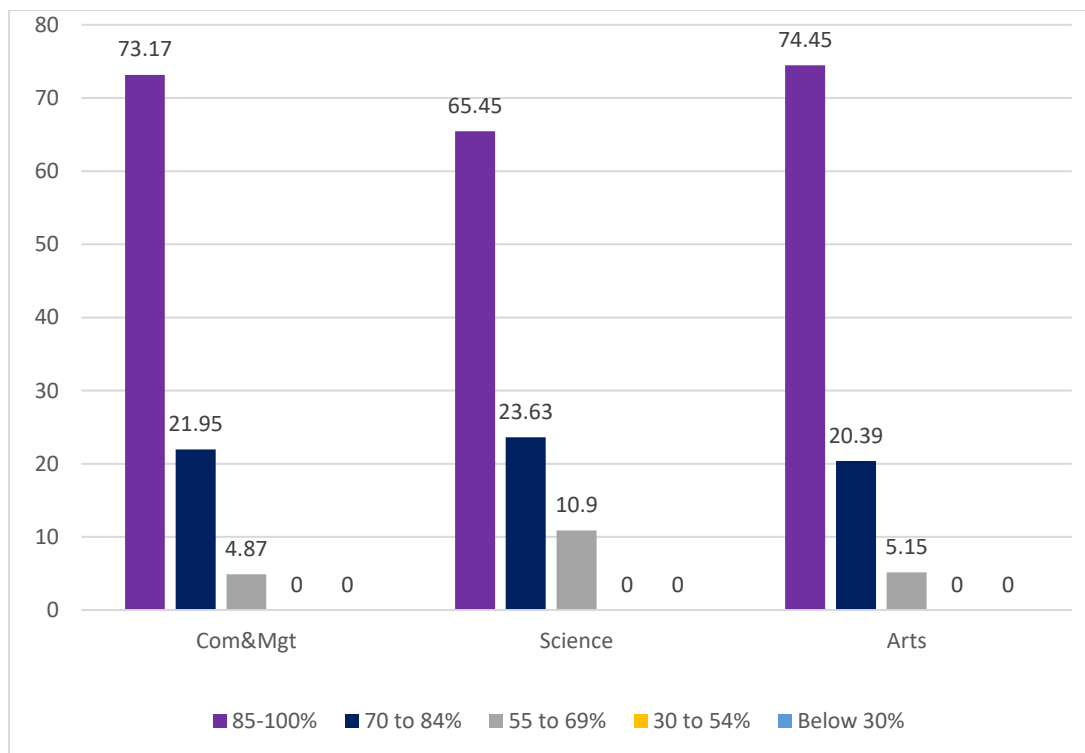
1. The institution makes effort to engage students in the monitoring, review and continuous quality improvement of the teaching learning process through feedback and similar system.



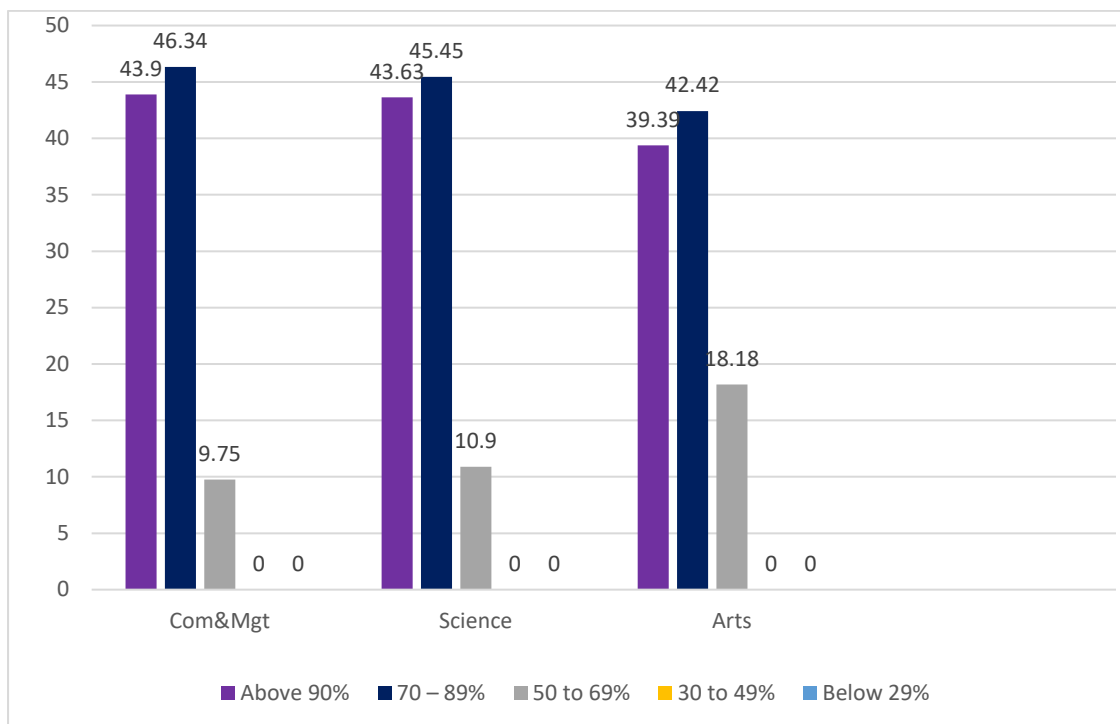
2. The institute provides value-added courses imparting transferable and life skills.



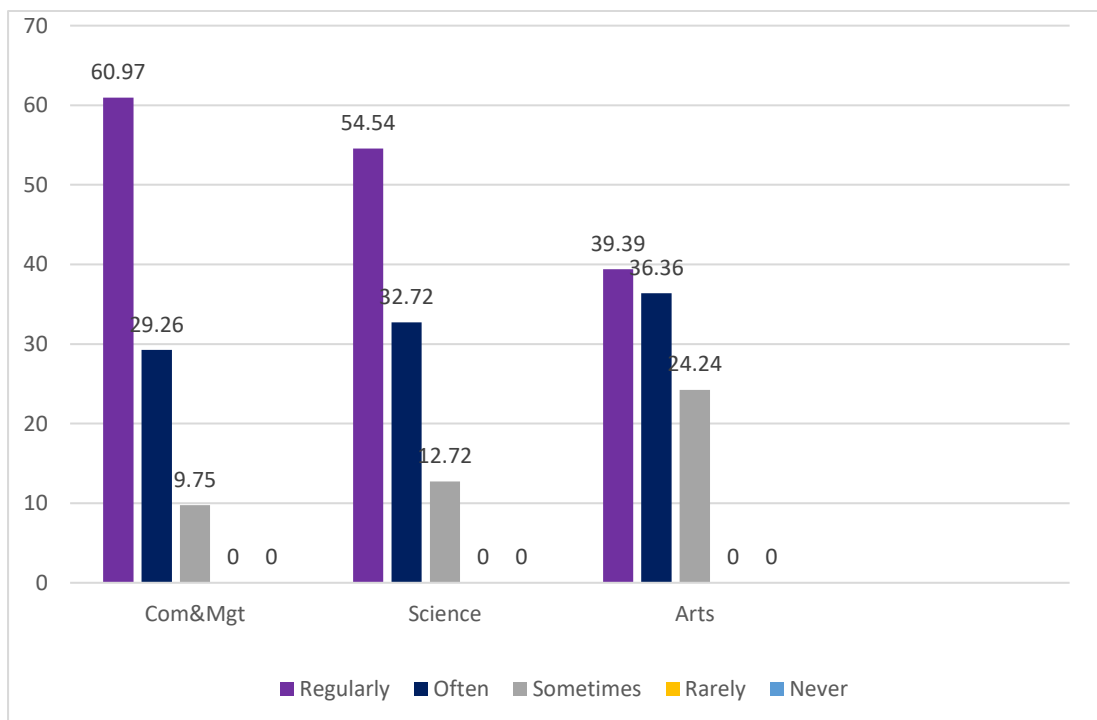
3. Syllabus covered in the class.



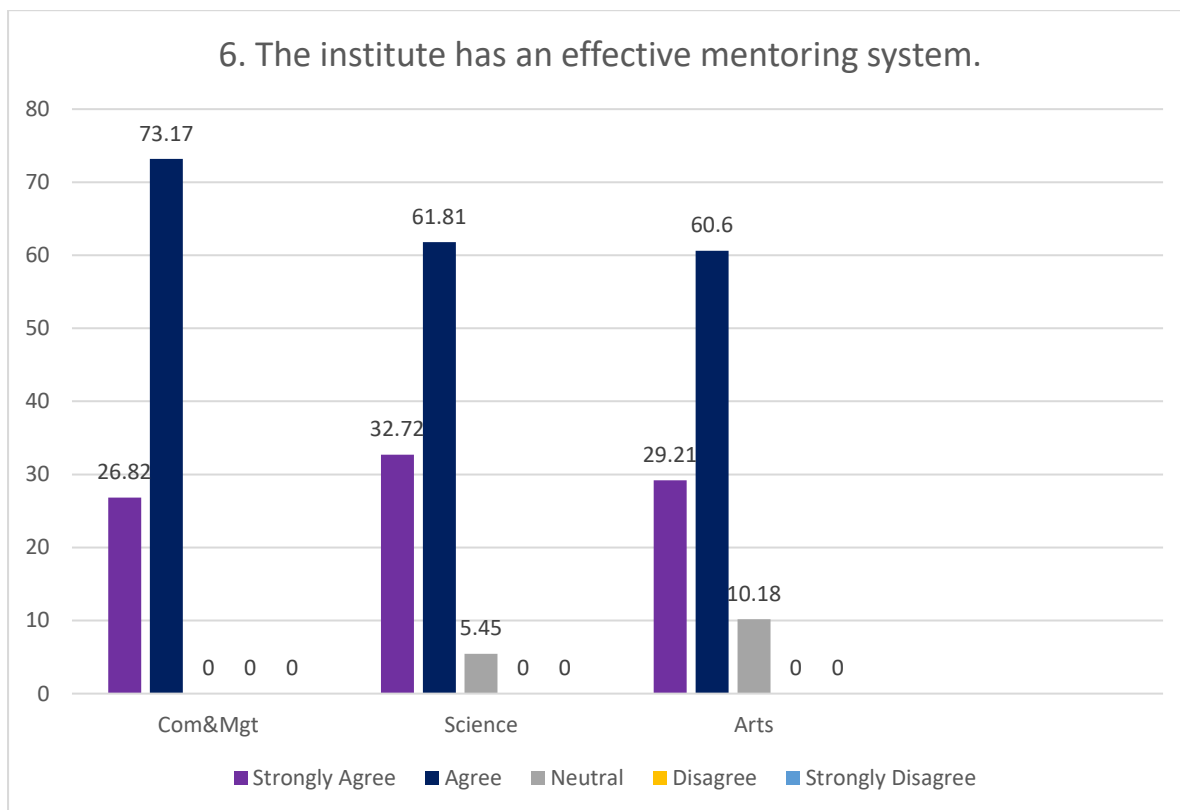
4. Percentage of teachers using ICT tools such as LCD projector, multimedia, etc. while teaching.



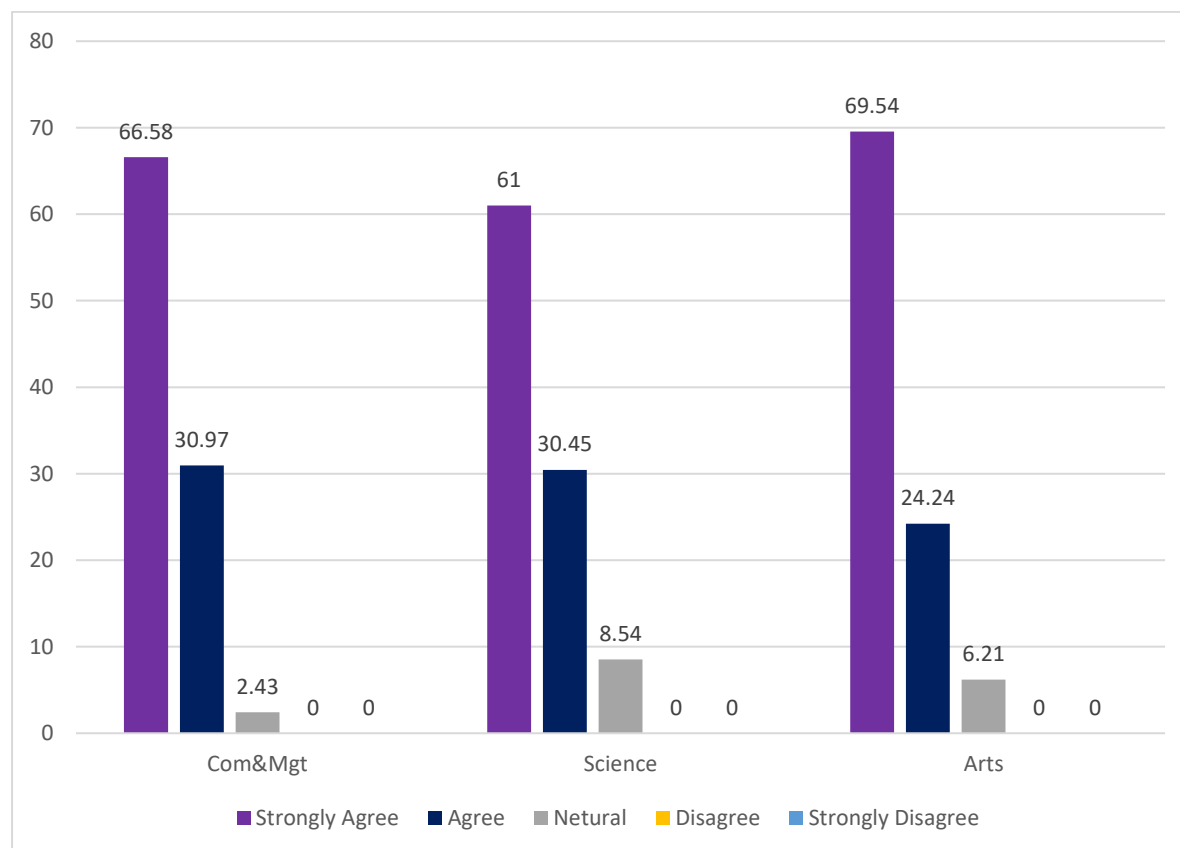
5. The institution takes active interest in promoting internship, student exchange, field visit, study tours, training programs etc and other opportunities for students.



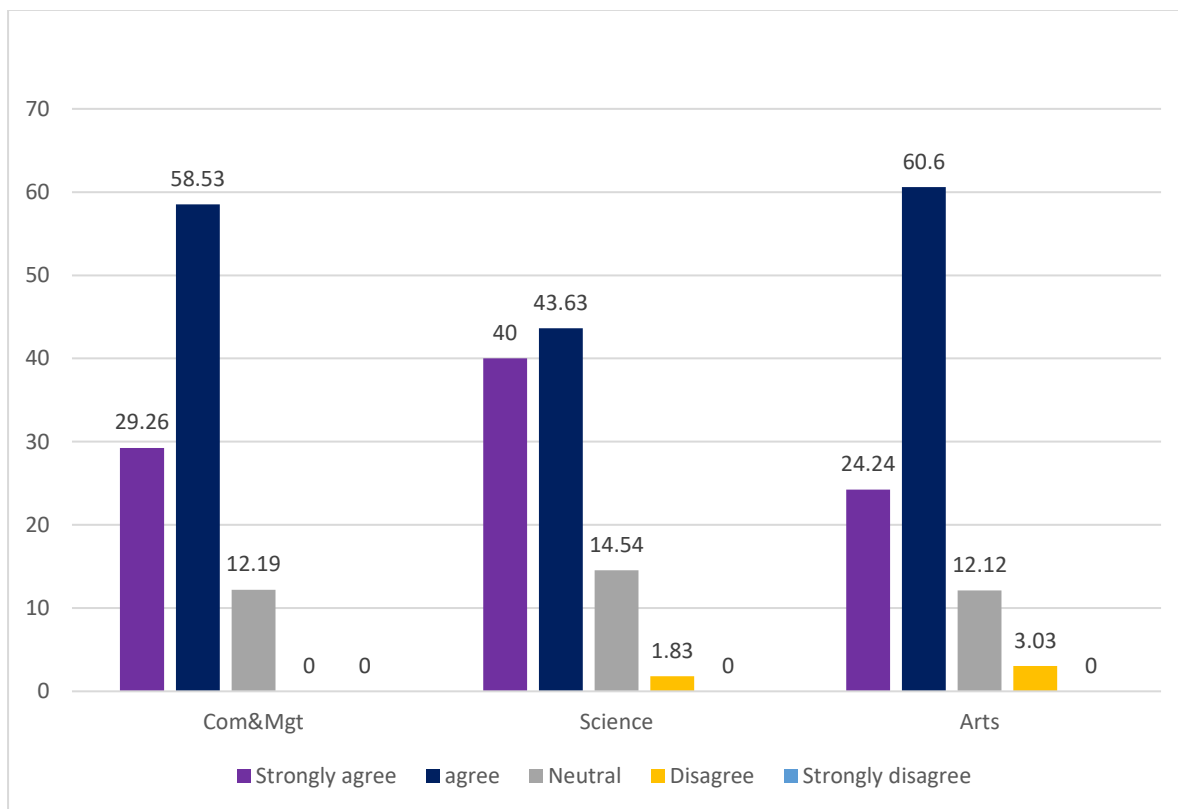
6. The institute has an effective mentoring system.



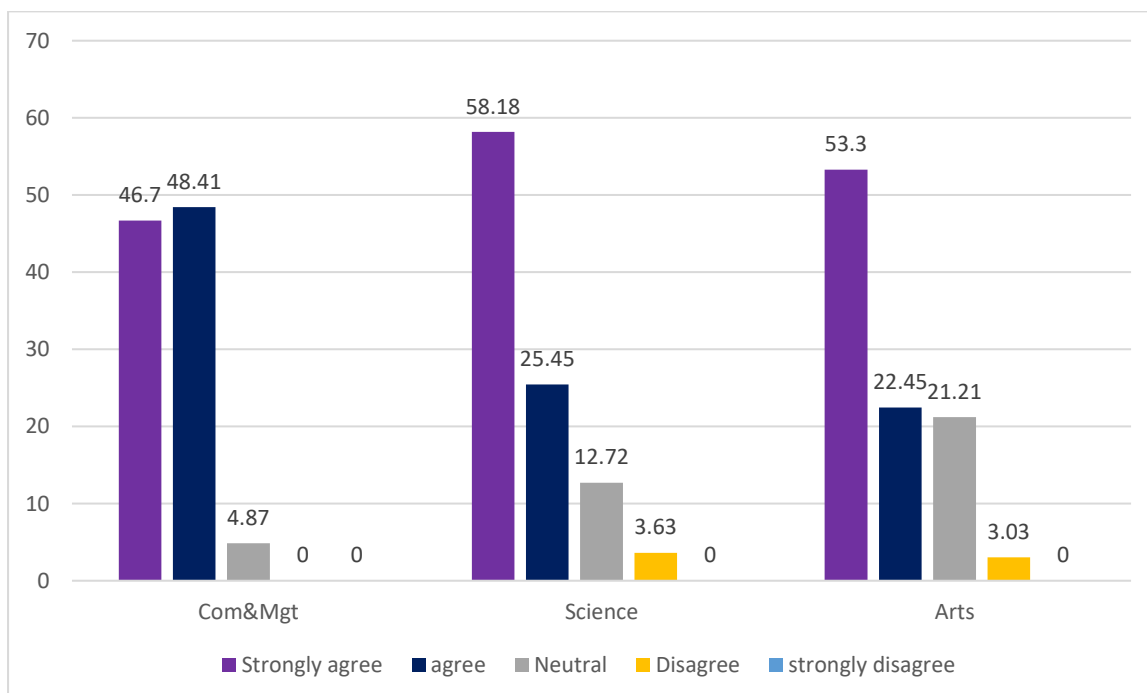
7. The overall quality of teaching-learning process is very good



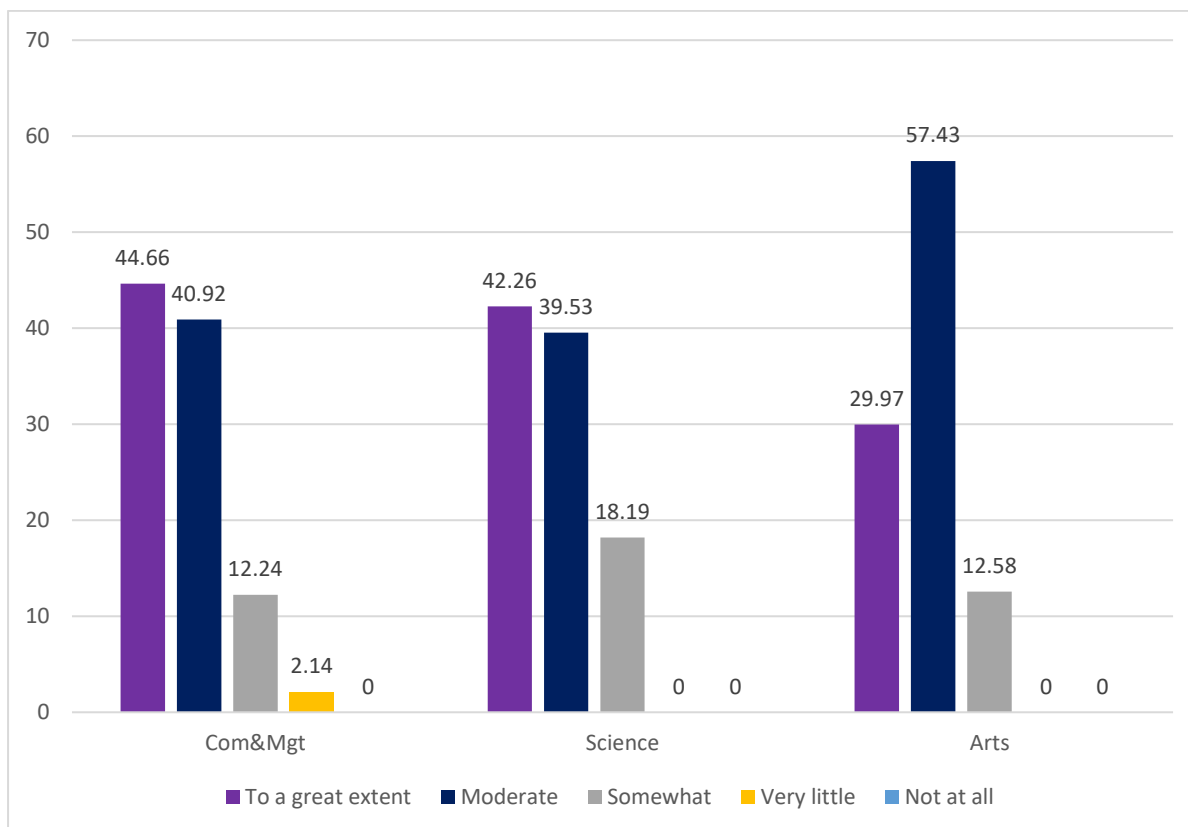
8. The institution provides multiple opportunities to learn and grow. (like sports, training programs, NSS, NCC, etc)



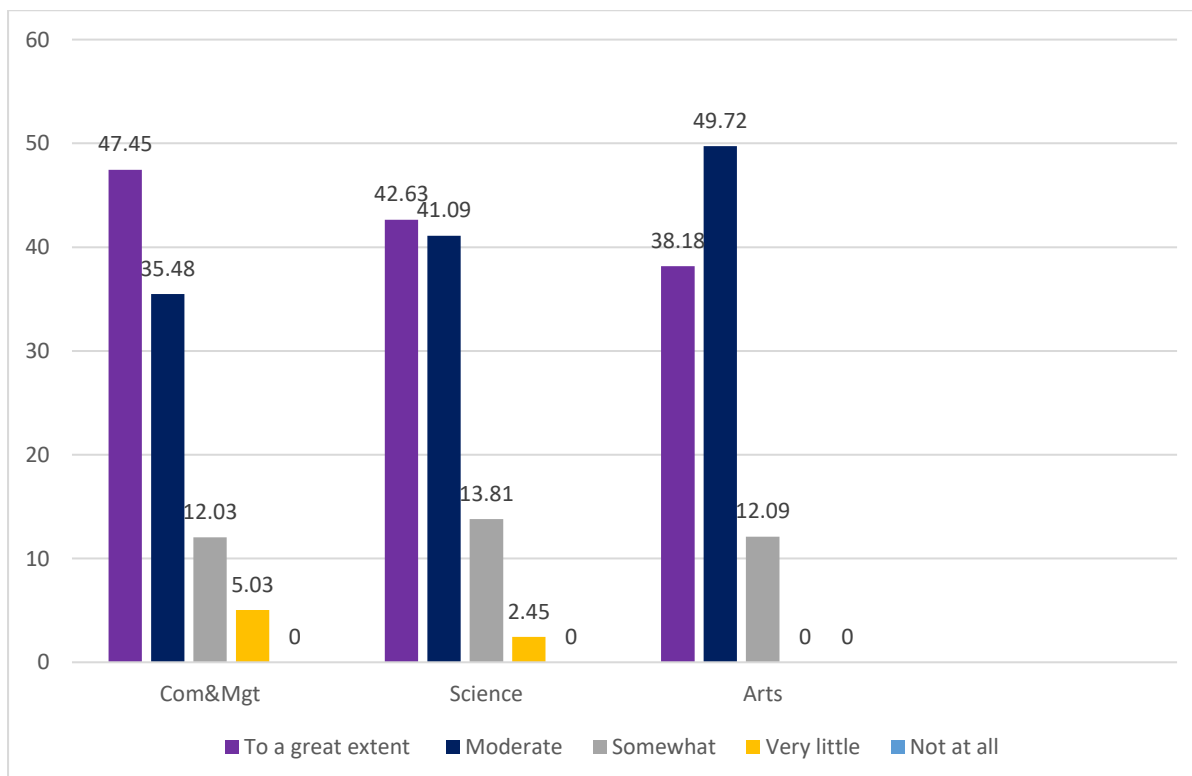
9. The institute has well-furnished support facilities laboratory, library, computers, classrooms etc.



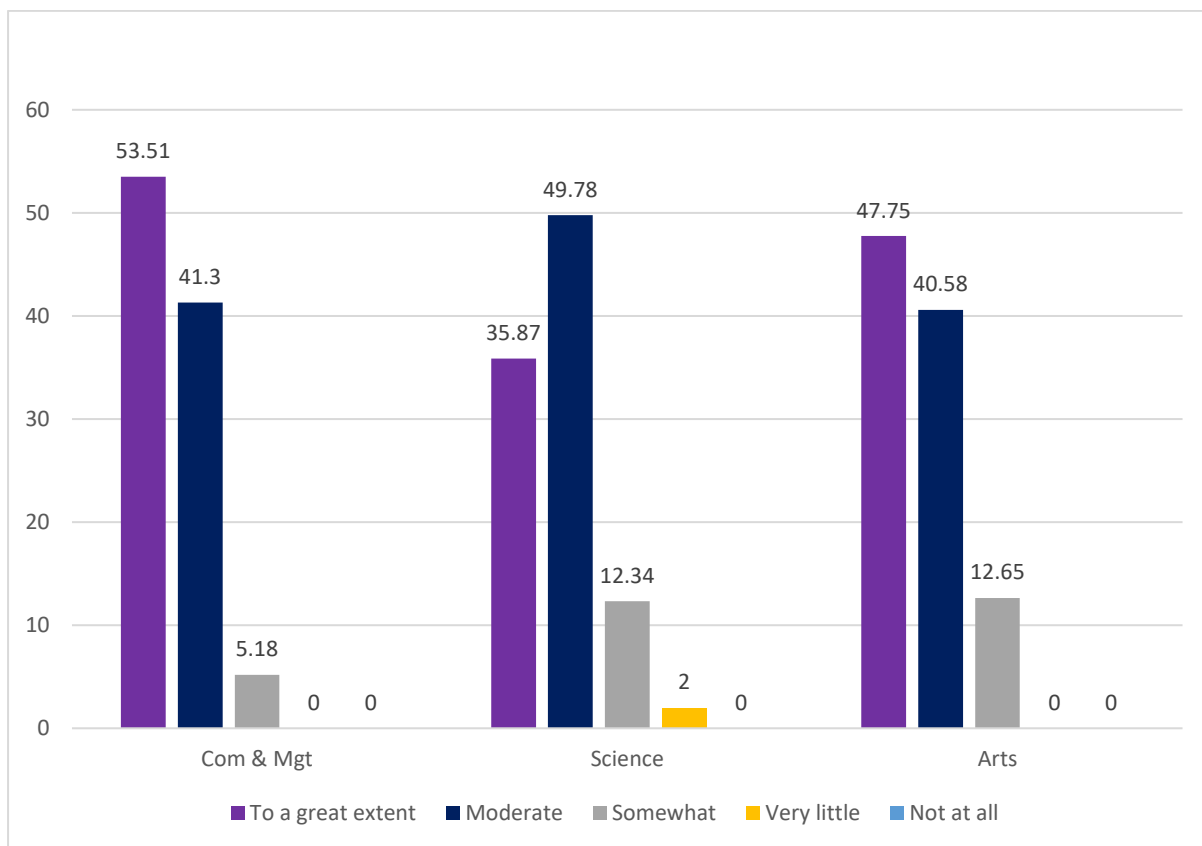
10. Students are benefited by guidance for competitive examinations and career counselling offered by the institution.



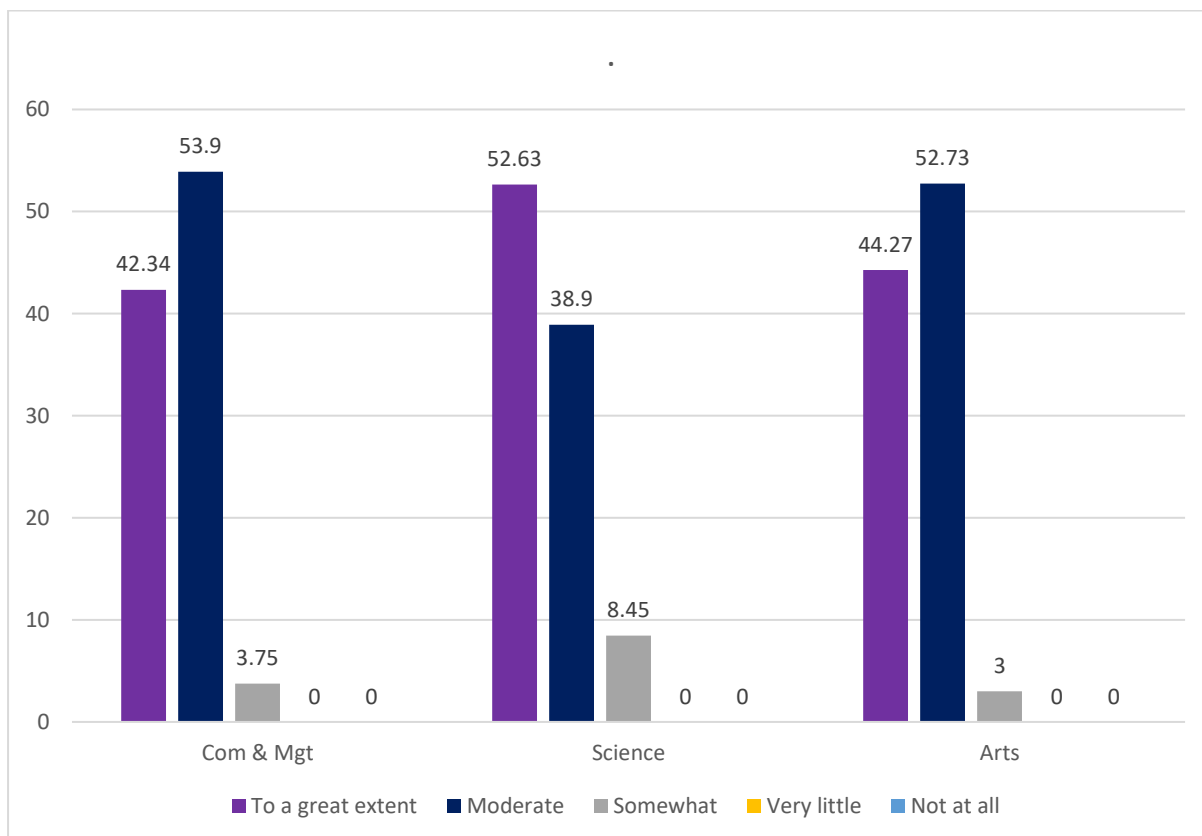
11. Efforts are made by the institute/teachers to inculcate soft skills, life skills and employability skills to make you ready for the world of work.



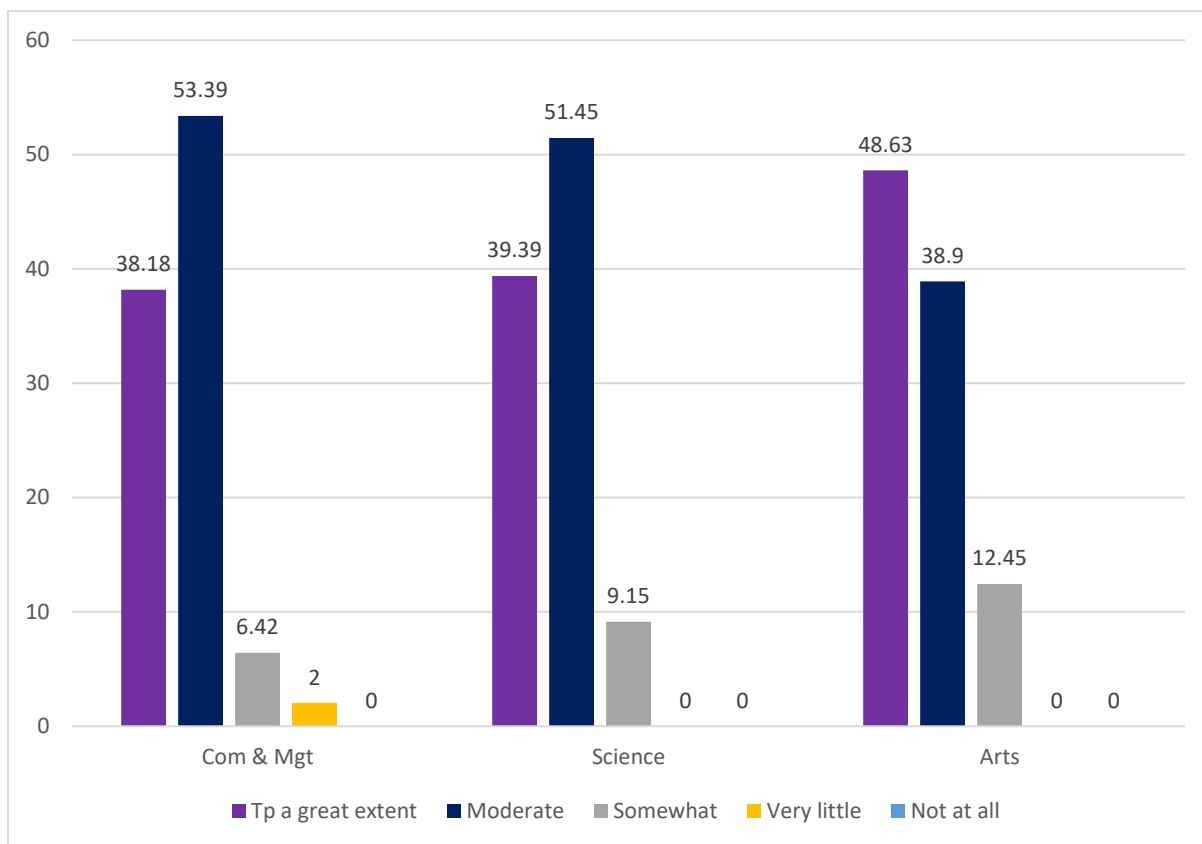
12. The institution has student council and representation of students in academic and administrative bodies/committees of the institution



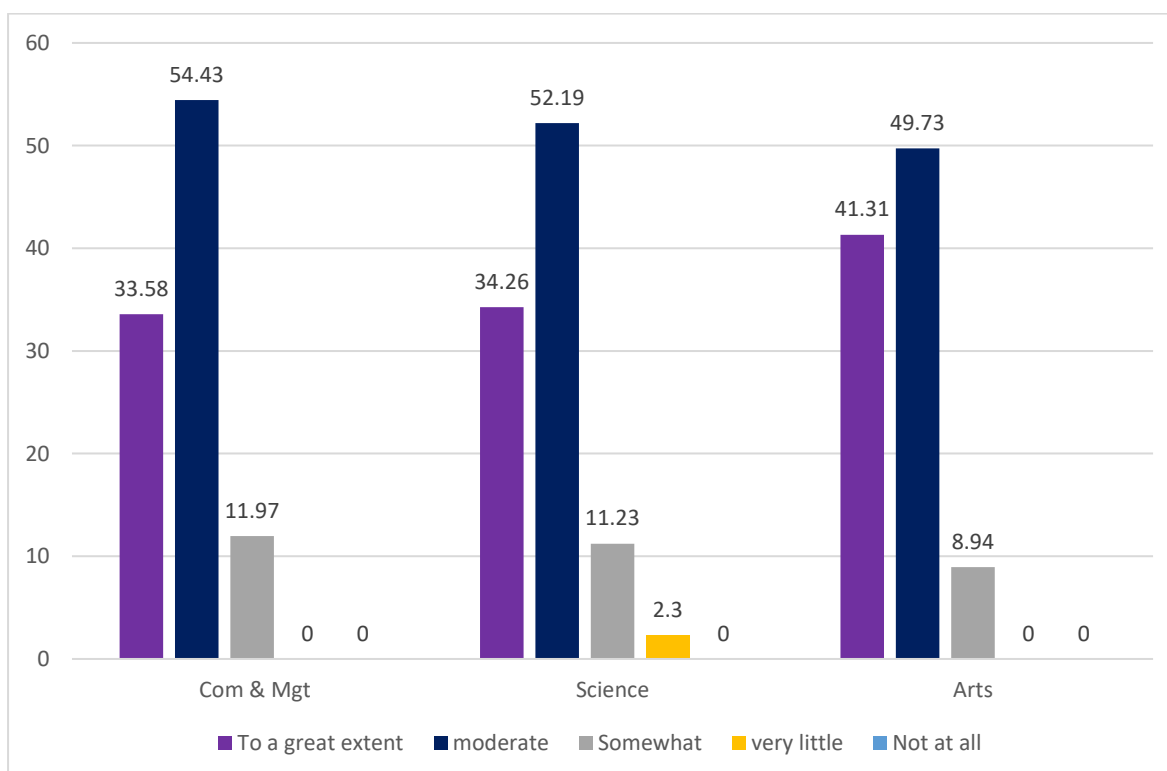
13. Welfare schemes for students like scholarships, fellowships, etc are available



14. The institute promotes gender equality, environmental consciousness and sustainability/alternative energy initiatives.



15. The institution organizes activities for community services on current issues.





ANALYSIS

Constructive feedback is an effective tool to create a dynamic environment for improvement and achieving better results. It is important for an institution to consider the opinions of the students to make it student-friendly and to analyse the areas for improvement.

The result of student satisfaction survey conducted during the 2020-21 academic year was examined using a 5-point scale. 15 parameters describing the quality and conduct of academic activities, infrastructure of the institution and non-academic opportunities promoted by the institution are tested in the survey. An online survey yielded 129 responses. The students are satisfied with the academic programmes in the institution and the standard of teaching is rated as best. 88% of students selected “Strongly Agree” and “Agree” to indicate that the overall teaching quality is very high or exceptional. None of the students responded “Not at all” against the parameter on the awareness of welfare schemes and scholarships provided for the students. And this indicates the effort taken by the institution in providing the financial assistance for the students in learning.

However, the survey indicates the need for involving students in co-curricular activities and encouraging their talents to a greater extent.

ACTION TAKEN

The IQAC analysed the results generated from the survey and adopted suitable measures to improve in areas needed. IQAC recommended considering proposals to initiate extra-curricular activities in the institution to promote the holistic development of the students. Department level and college level programmes are conducted effectively ensuring the participation of all students. Also, funds are allocated by the institution for the implementation of such programmes.